



Vortex Spas

## Titanium Spa Technical Information Pack



Dimensions: 300 x 230 x 90cm

---

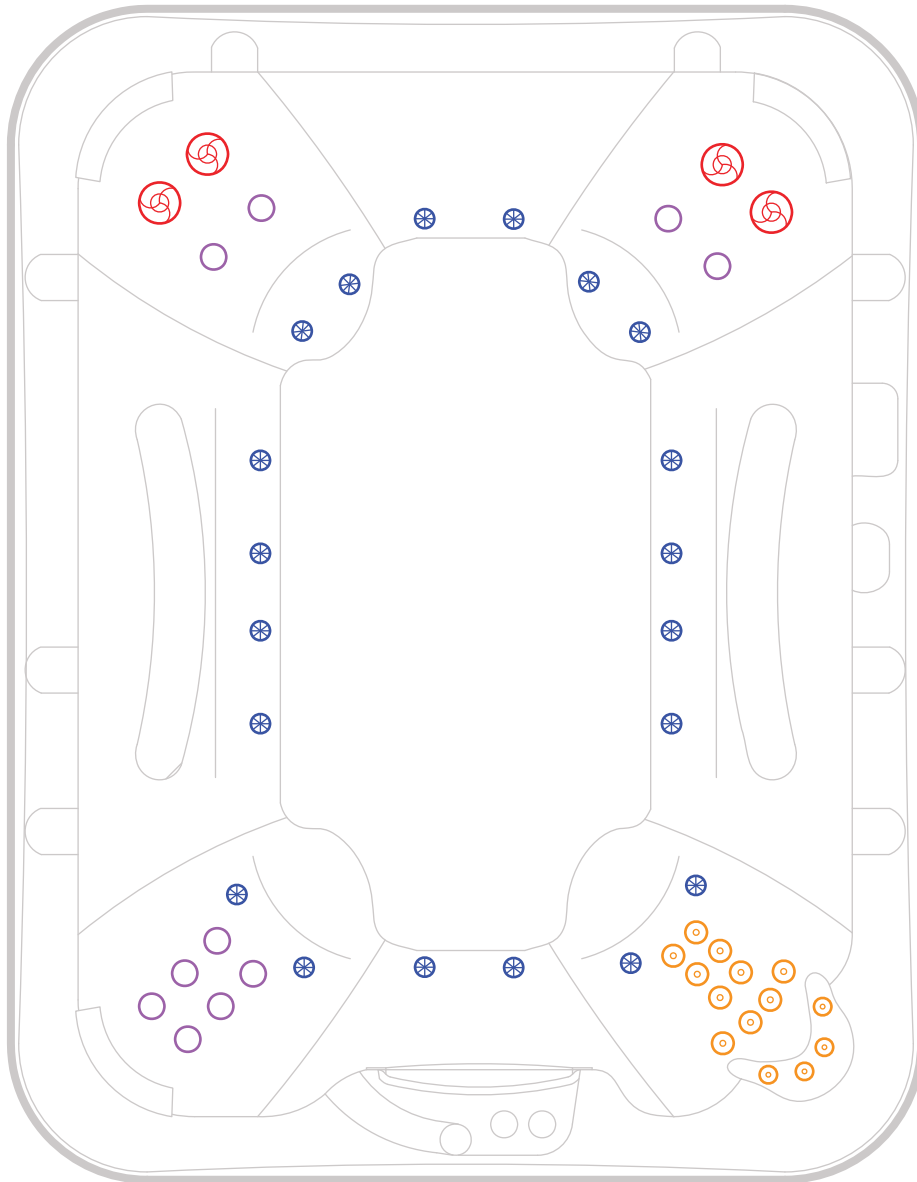
Our biggest selling large hydrotherapy spa.  
Comfortably seats up to 9 adults.

---



## Titanium Spa

Dimensions: 300 x 230 x 90cm



 4 x 127mm Single Spinning Jets

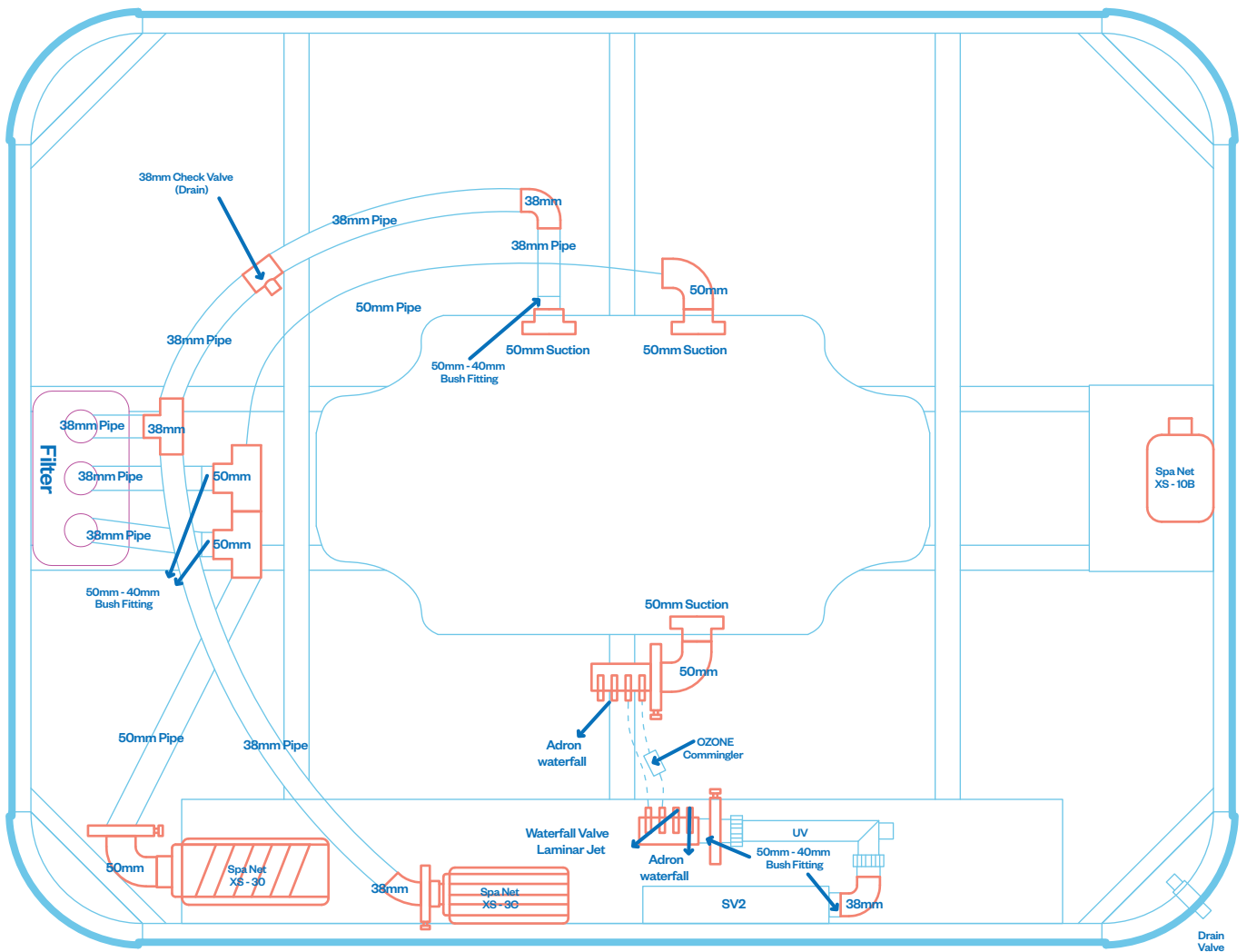
 10 x 75mm Directional Jets

 20 x 40mm Air Jets

 14 x 50mm Directional Jets

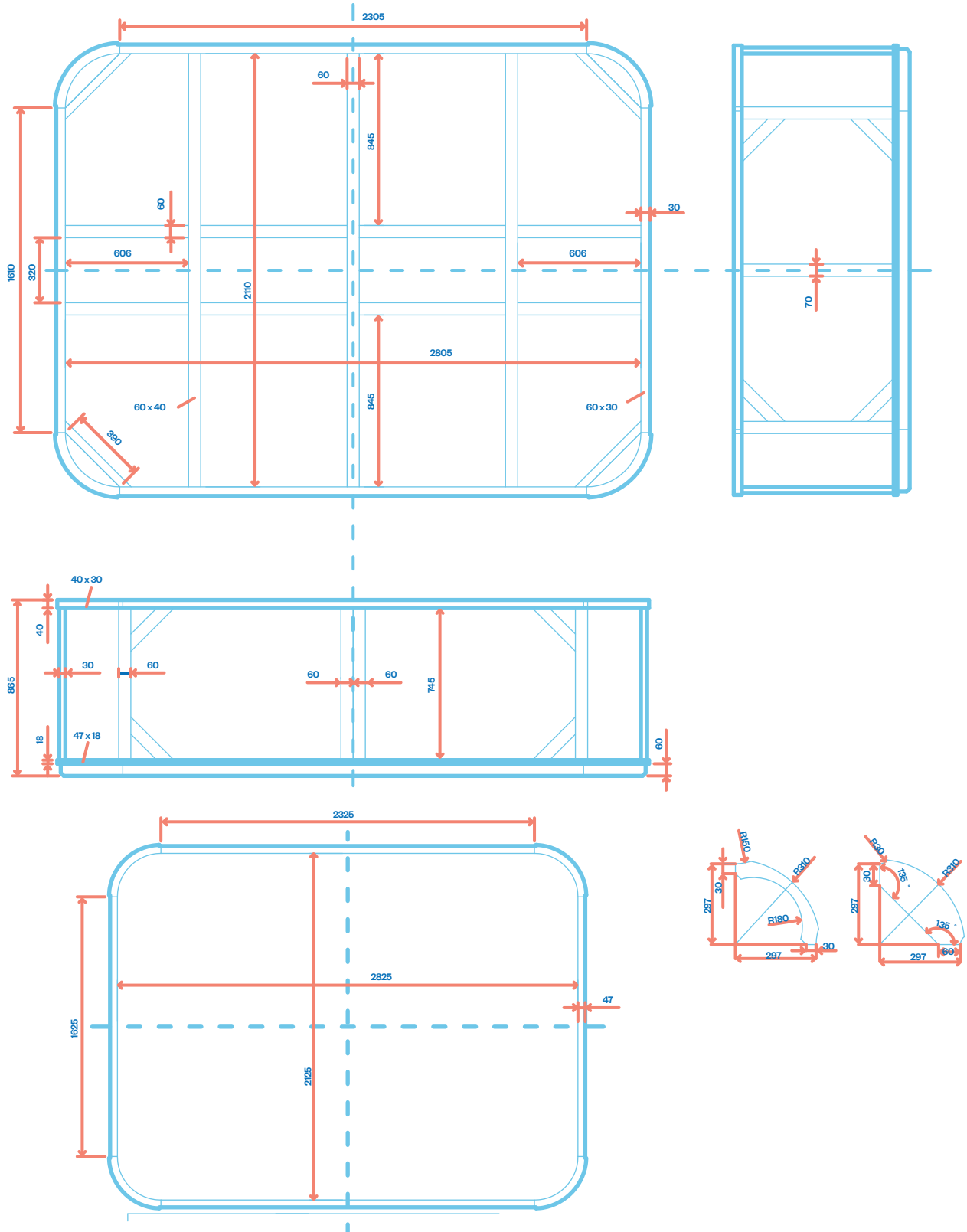


# Titanium Spa



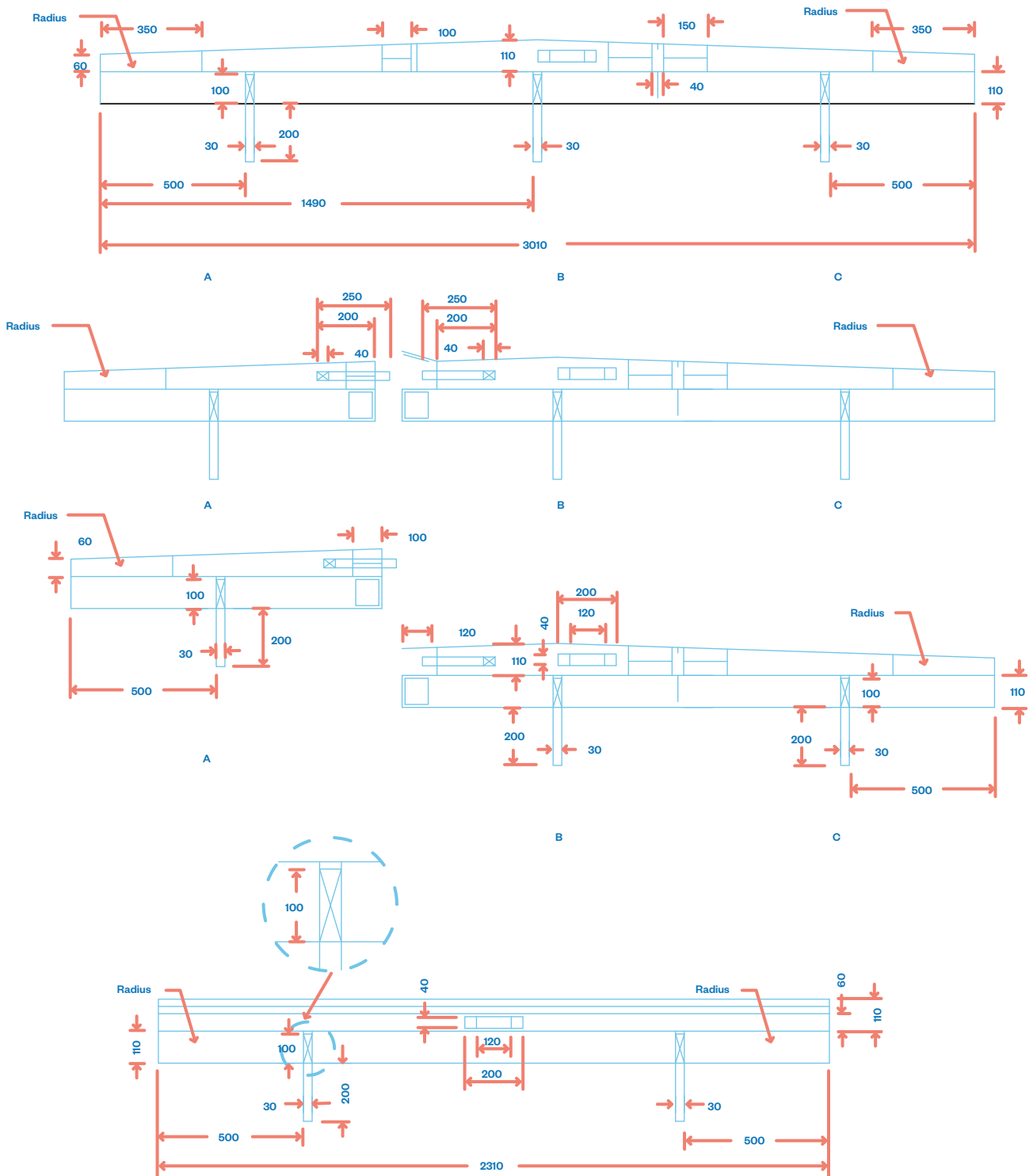


# Titanium Spa



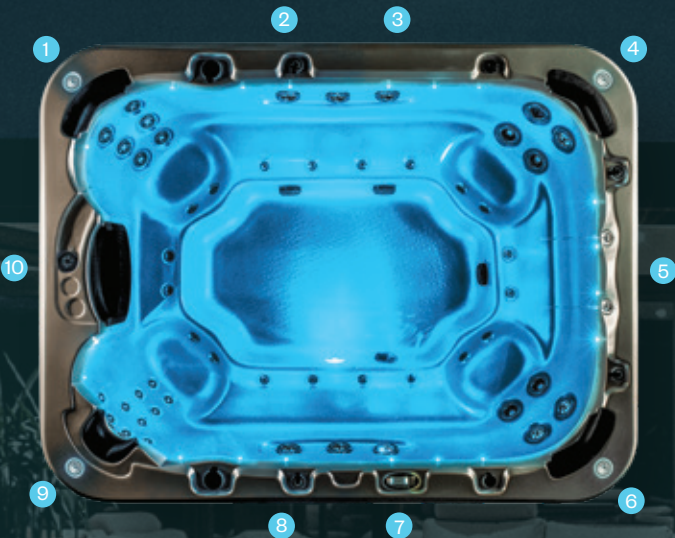


# Titanium Spa



# Titanium.

|              |                       |
|--------------|-----------------------|
| Hydrotherapy | ★ ★ ★ ★ ★             |
| Jets         | 48 / 54 (Hydroplus)   |
| Volume       | 2120 litres           |
| Seating      | 10 seats              |
| Dimensions   | 3.0 x 2.3 x .90m high |
| Seat layout  |                       |



- |                              |                 |
|------------------------------|-----------------|
| 1. Back massage              | 2. Bench seat   |
| 3. Bench seat                | 4. Back massage |
| 5. Cool down                 | 6. Back massage |
| 7. Bench seat                | 8. Bench seat   |
| 9. Neck and shoulder massage | 10. Cool down   |



\* Conditions apply. Specifications may change without notice. May be pictured with some options included.

## Features

### Spa features

- LED backlit water cascade
- Spa health indicator
- Aromatherapy system
- Non-slip backlit drink holders
- Backlit laminar jets
- SmartSTREAM sound system\*

### Build

- Thermoclad maintenance free cabinet
- Superior USA made Aristech acrylic
- Thermobond 4 layer shell construction
- 12 shell/cabinet colour combinations
- Steel frame construction
- High impact moulded ABS base
- Duraflex 'no kink' PVC plumbing

### Water care

- Purezone micro filtration
- Purezone CD Ozone water clarifier
- Purezone UV sterilising system

### Lighting

- Programmable lighting
- Underwater LED floodlight
- Perimeter & cabinet lighting
- Hydroglow jet & topside control lighting

### Hydrotherapy

- Stainless steel jet casings
- Neck therapy collar
- Bench seats
- Individual seat pressure controls
- Hydroflow stainless steel spinning jets

### Control

- SpaNet premium control systems
- Smart phone app remote control\*
- SmartLINK WIFI connectivity\*

### Efficiency

- Intelligent thermal tuning
- High density lockable hardcover
- Perimeter insulation
- Dual layer insulation
- Hybrid heat pump\*
- Arctic pack insulation\*

\*optional

## Specifications

|                               |             | HP          |
|-------------------------------|-------------|-------------|
| Dry weight                    | 580kg       | 620kg       |
| Filled weight (inc cover)     | 2724kg      | 2764kg      |
| Lift weight                   | 750kg       | 750kg       |
| Intuitive spa controller      | SV2         | SV3         |
| Programmable circulation pump | 250W        | 250W        |
| Jet pumps                     | 3HP x 1     | 3HP x 2     |
| Variable speed airblower      | 1000W       | 1000W       |
| Variable output heater        | 3kW max     | 6kW max     |
| Electrical requirements       | 15 amps max | 32 amps max |

## Warranties

|                         |          |
|-------------------------|----------|
| Frame                   | Lifetime |
| Shell structure         | 10 years |
| Acrylic surface         | 5 years  |
| Jets, plumbing & heater | 5 years  |
| Pumps & equipment       | 2 years  |